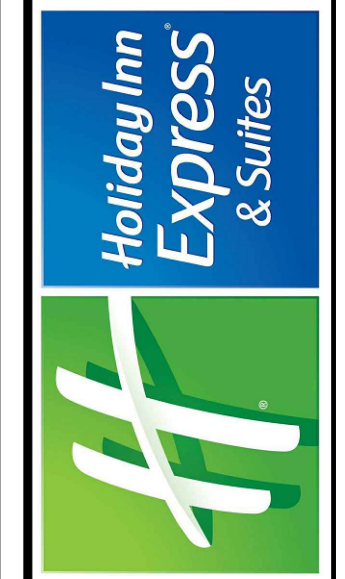


REVISION	NO.
CITY COMMENTS	1

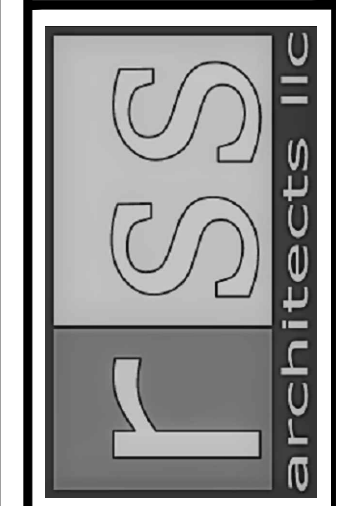
HOLIDAY INN EXPRESS
 850 NORTHSIDE DRIVE
 PILOT POINT, TEXAS 76258

LOCATION
 91024



FAST AND ACCURATE
 JAN. 06, 2024

 MEP GREEN DESIGN & BUILD, P.L.L.C.
 REGISTRATION # F-10882
 915 GEMM ST., HOUSTON, TX 77058
 Tel: (281)-282-9144
 Fax: (281)-282-9144
 www.mepgreenesigns.com



RSS-ARCHITECTS.COM
 817/538-9258

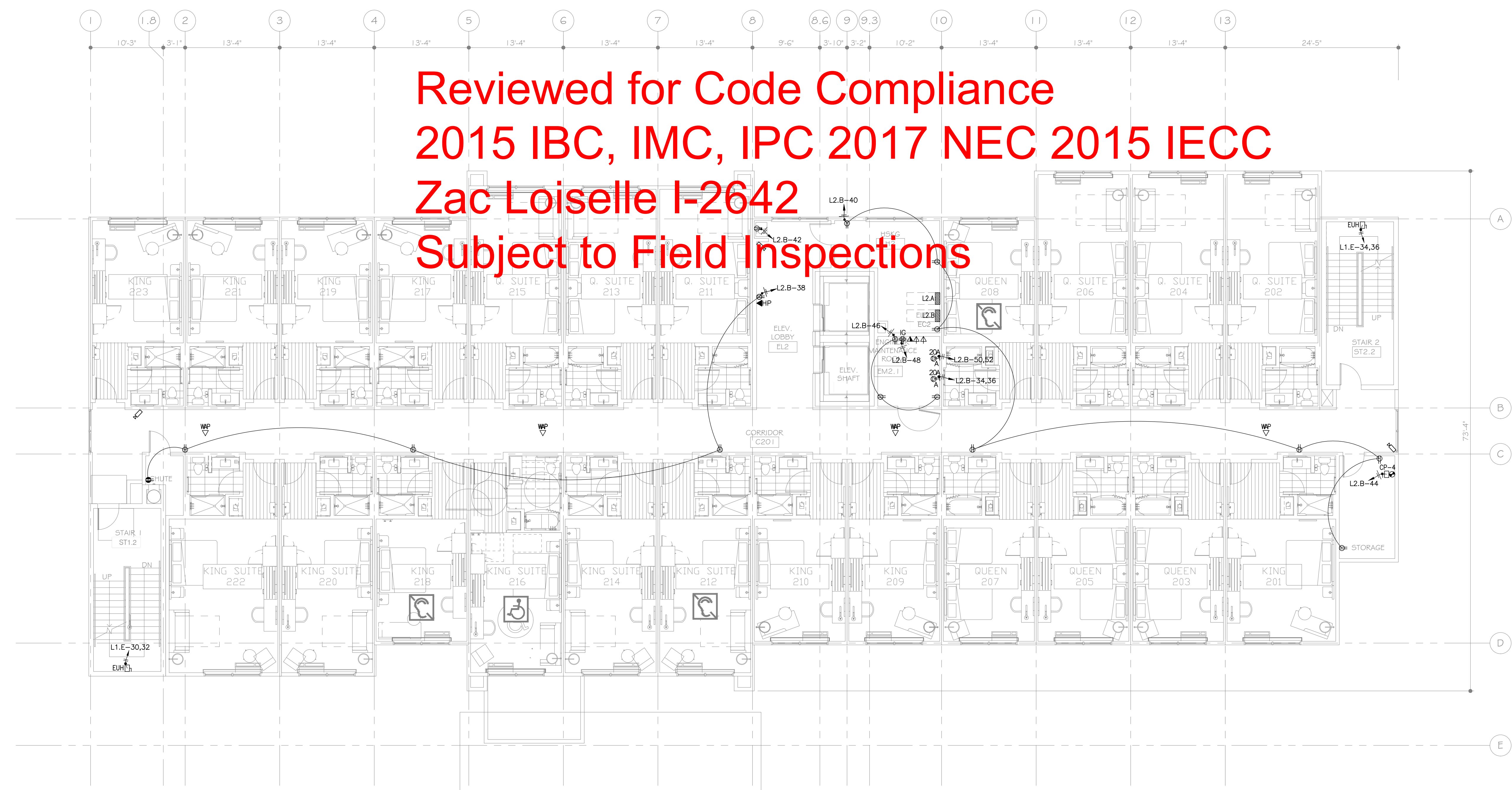
Date 01-08-2024

Job 22020

Sheet

E3.1

Reviewed for Code Compliance
2015 IBC, IMC, IPC 2017 NEC 2015 IECC
Zac Loiseau I-2642
Subject to Field Inspections



1 POWER SECOND FLOOR PLAN
 SCALE: 1/8"=1'-0"

- GENERAL NOTES:**
- FOR ALL HOME RUNS (FROM UNITS) 100 FT OR MORE, THE ELECTRICAL CONTRACTOR HAS TO CHECK THE VOLTAGE DROP AND SELECT THE SUITABLE CABLES SIZE TO COMPLY WITH THE MAXIMUM ALLOWED VOLTAGE DROP FOR THE FEEDER CONDUCTORS (3%), THE MAXIMUM COMBINED VOLTAGE DROP ON BOTH INSTALLED FEEDER CONDUCTORS AND BRANCH CIRCUIT CONDUCTORS TO THE FARTHEST CONNECTED LOAD OR OUTLET SHALL NOT EXCEED 5 PERCENT.
 - THE CONTRACTOR SHALL VERIFY WITH THE OWNER/ FRANCHISE FOR THE QUANTITIES AND LOCATIONS OF THE LOW VOLTAGE SYSTEM DEVICES (CAMERA, CARD READER, WIRELESS ACCESS POINT, INTERCOM, ETC.) AND PROVIDE ALL NECESSARY ACCESSORIES TO COMPLETE THE WIRING, POWER SUPPLY FOR THE DEVICES AS PER THE MANUFACTURER SPECIFICATIONS/ INSTALLATION GUIDELINES.
 - CONTRACTOR HAVE TO INSTALL APPROVED MOBILE KEY CERTIFIED RFID LOCK SYSTEM WITH BLUETOOTH LOW ENERGY (BLE) KEY READER ON ALL DOORS INCLUDING, BUT NOT LIMITED TO, GUESTROOM ENTRIES, GUEST ACCESSED FACILITIES, EXTERIOR ENTRANCES, PARKING, MEETING SPACES, AND BACK OF HOUSE DOORS AT THE FRONT DESK/CHECK-IN STATION, AND FRONT OFFICE.
 - SEE TYPICAL GUESTROOM PLAN FOR DETAILED ROOM LAYOUT ON SHEET E4.0.
 - VERIFY LOCATIONS AND QUANTITIES OF WIRELESS ACCESS POINT (WAP) WITH THE OWNER / HOTEL OPERATOR PRIOR TO INSTALLATION.

NOTE FOR EMERGENCY RESPONDER RADIO COVERAGE SYSTEM:

- CONTRACTOR SHALL PROVIDE EMERGENCY POWER (CIRCUIT EP-18) FOR EMERGENCY RESPONDER RADIO SYSTEM AT 2ND FLOOR USING 2#12, 1/2" C.

NOTE FOR FIRE SMOKE DAMPER:

- CONTRACTOR SHALL PROVIDE J-BOXES FOR FIRE SMOKE DAMPERS AT 2ND FLOOR, CONNECT TO L2.B-66, USING 2#12, 1/2" C.

MEP GREEN DESIGN & BUILD, P.L.L.C. RETAINS COPYRIGHT TO THIS DOCUMENT, THE IDEA DESIGN AND DETAILS AS A PROFESSIONAL AND INTELLECTUAL INSTRUMENT OF SERVICE, AND IS NOT TO BE USED/COPIED IN WHOLE OR IN PART, FOR ANY OTHER PROJECT WITHOUT THE EXPRESSED WRITTEN CONSENT OF MEP GREEN DESIGN & BUILD, P.L.L.C.