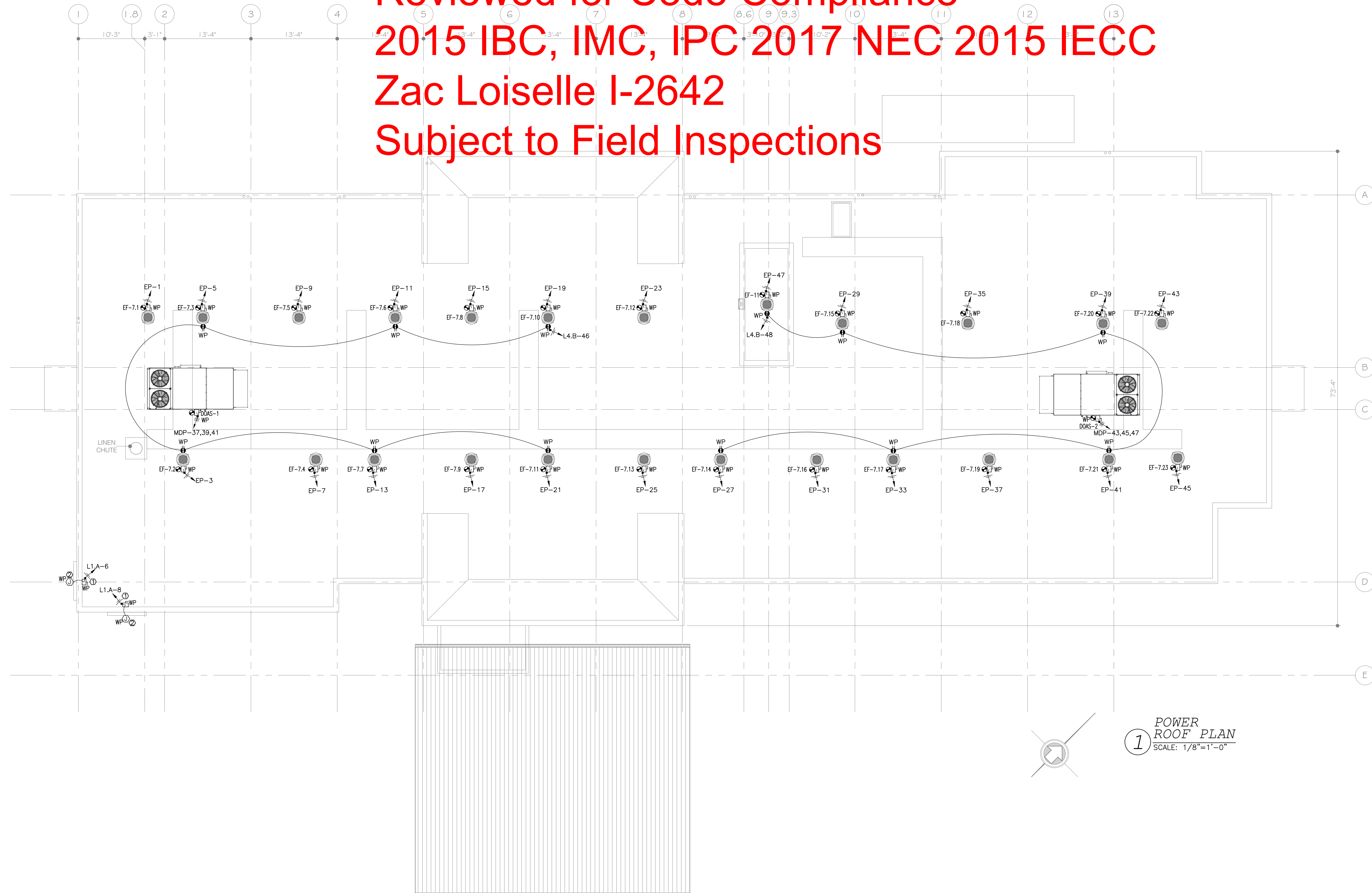


Reviewed for Code Compliance  
 2015 IBC, IMC, IPC 2017 NEC 2015 IECC  
 Zac Loiseau I-2642  
 Subject to Field Inspections



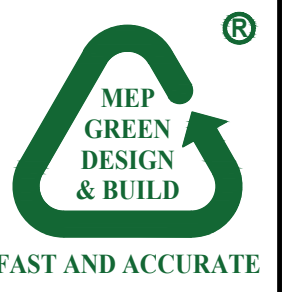
KEYED NOTES:	
1.	DISCONNECT FOR SIGN.
2.	LOCATION FOR SIGN CONNECTION. VERIFY LOCATION WITH ARCHITECTURAL PLAN PRIOR TO INSTALLATION.

MEP GREEN DESIGN & BUILD PLLC RETAINS COPYRIGHT TO THIS DOCUMENT. THE IDEA DESIGN AND DETAILS AS A PROFESSIONAL AND INTELLECTUAL INSTRUMENT OF SERVICE, AND IS NOT TO BE USED/COPIED IN WHOLE OR IN PART, FOR ANY OTHER PROJECT WITHOUT THE EXPRESSED WRITTEN CONSENT OF MEP GREEN DESIGN & BUILD PLLC.

REVISION	NO.
CITY COMMENTS	1

**HOLIDAY INN EXPRESS**  
 850 NORTHSIDE DRIVE  
 PILOT POINT, TEXAS 76258

LOCATION  
 91024

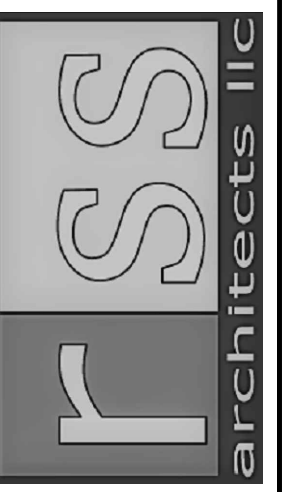


FAST AND ACCURATE

JAN. 06, 2024



MEP GREEN DESIGN & BUILD PLLC  
 REGISTRATION # F-10982  
 915 GEMIN ST., HOUSTON, TX 77058  
 Tel: (281)-282-1155  
 Fax: (281)-282-9144  
 www.mepgreendesigns.com



RSS-ARCHITECTS.COM  
 817/538-9258

Date 01-08-2024

Job 22020

Sheet

E3.4