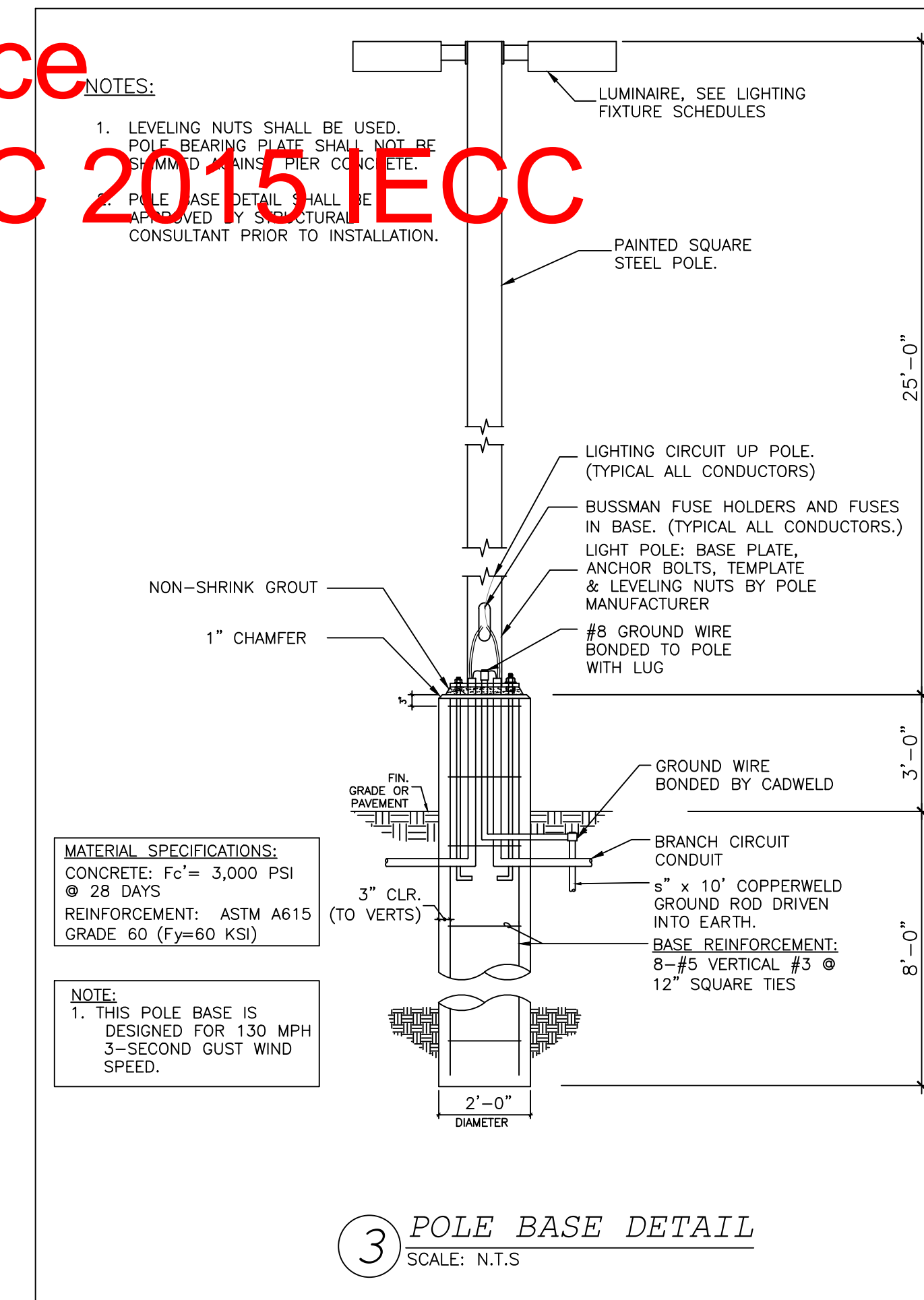
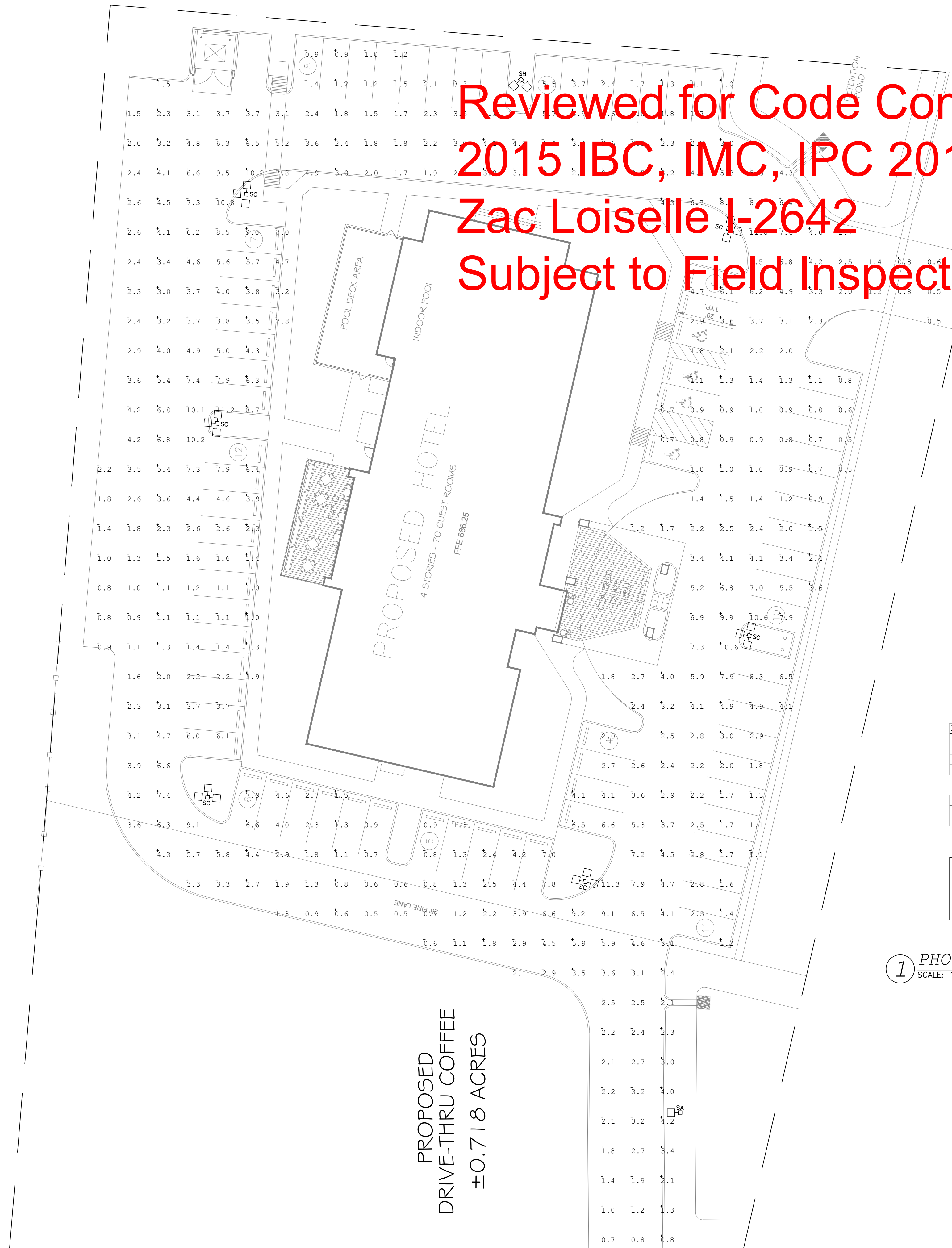


Reviewed for Code Compliance  
 2015 IBC, IMC, IPC 2017 NEC 2015 IECC  
 Zac Loiseau I-2642  
 Subject to Field Inspections



3 POLE BASE DETAIL  
 SCALE: N.T.S.

Qty	Label	Arrangement	LLF	Description	Lum. Watts	Total Watts	Lum. Lumens
6	SC	3 @ 90 DEGREES	1.000	SES-SB5-3000-100-T3 3@90	102.07	1837.26	12521
1	SB	2 @ 90 DEGREES	0.800	SES-SB5-3000-100-T3 2@90	102.07	204.14	12521
1	SA	SINGLE	1.000	SES-SB5-3000-100-T3	102.07	102.07	12521

Label	CalcType	Units	Avg	Max	Min	Avg/Min	Max/Min
Car Parking	illuminance	Fc	3.33	11.3	0.5	6.66	22.60

NOTE:  
 THE CONTRACTOR SHALL BE RESPONSIBLE FOR CONDUCTING THE SITE LIGHTING PHOTOMETRIC TESTING AND COMMISSIONING TO ENSURE THE ACTUAL PHOTOMETRIC READINGS ARE CONSISTENT WITH THOSE OF THE DESIGNED PHOTOMETRIC PLAN.

1 PHOTOMETRIC PLAN  
 SCALE: 1/20"=1'-0"

REVISION	NO.
CITY COMMENTS	1
<b>HOLIDAY INN EXPRESS</b>	
850 NORTHSIDE DRIVE PILOT POINT, TEXAS 76258	
LOCATION 91024	
MEP GREEN DESIGN & BUILD, P.L.L.C. REGISTRATION # F-10982 915 GEMIN ST, HOUSTON, TX 77058 Tel: (281)-786-1155 Fax: (281)-282-9144 www.mepgreendesigns.com	
RSS-ARCHITECTS.COM 817/538-9258	
Date	01-08-2024
Job	22020
Sheet	E5.1