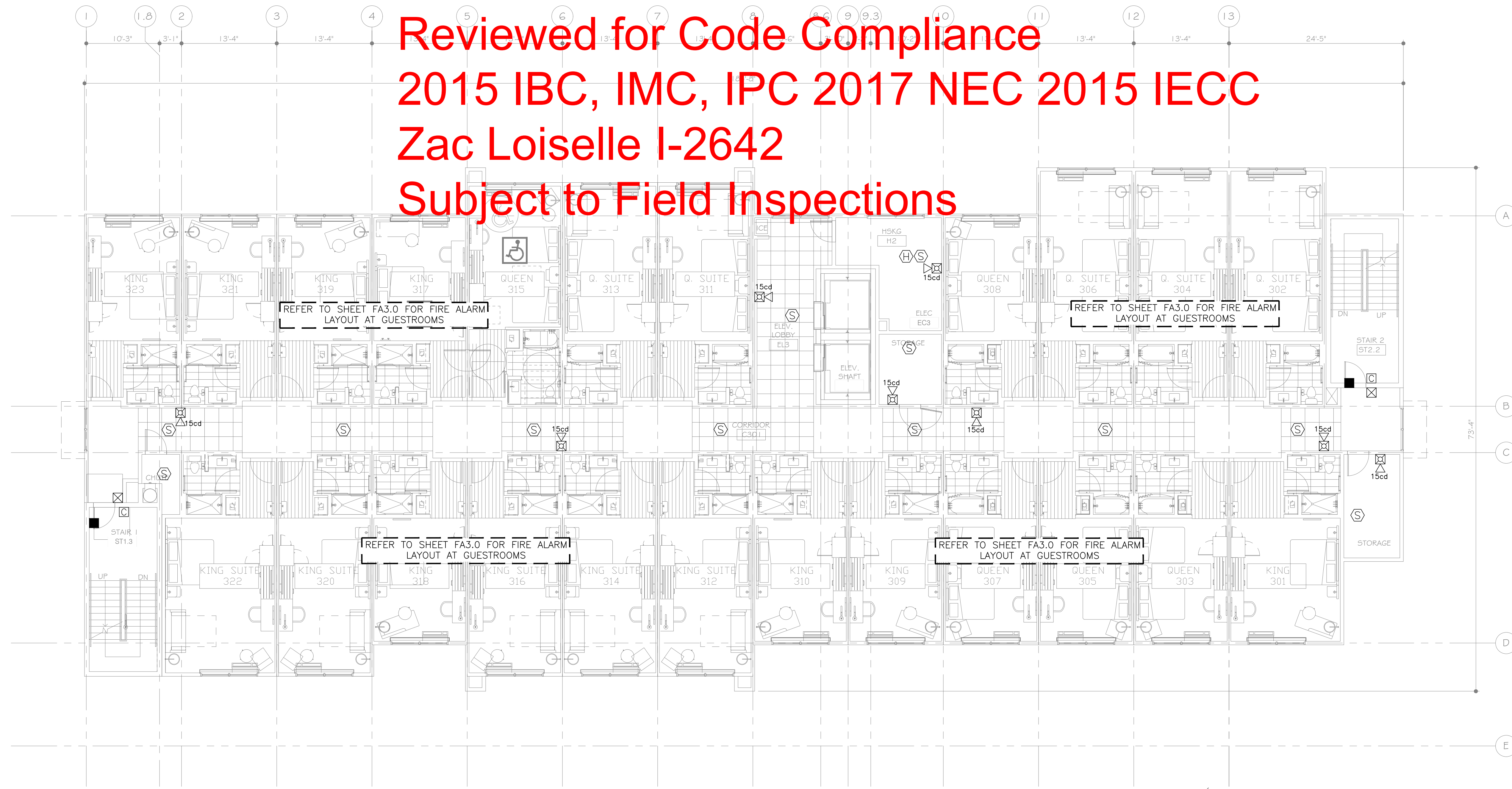


Reviewed for Code Compliance
 2015 IBC, IMC, IPC 2017 NEC 2015 IECC
 Zac Loiseau I-2642
 Subject to Field Inspections



FIRE ALARM SYMBOL LIST		
SYMB.	DESCRIPTION	MOUNTING OR AS INDICATED
☒	FIRE ALARM MANUAL PULL STATION	WALL - 48" AFF
☒☒	ANNUNCIATOR AUDIO/VISUAL(HORN/STROBE)	WALL - 6"-8" AFF
☒☒	COMBINATION HORN/STROBE LIGHT	WALL - 6"-8" AFF
☒☒	STROBE LIGHT	WALL - 6"-8" AFF
☐	FIRE BELL	WALL
☒	SMOKE DETECTOR	CEILING
☐	DUCT DETECTOR	IN MECH. DUCT
☒	HEAT DETECTOR	CEILING
☐	MAGNETIC DOOR HOLDER	WALL
☐	SPECIAL DEVICE (AS NOTED)	
☒	SHUT DOWN RELAY	
☒	FLOW SWITCH (SPRINKLER)	
☒	TAMPER SWITCH (SPRINKLER)	
☒	SMOKE DETECTOR	WALL
☐	CARBON MONOXIDE DETECTOR	
☒	FIREMAN'S PHONE	WALL - 48" AFF.
☒	2-WAY COMMUNICATION DEVICE	WALL - 48" AFF.
☐	ANNUNCIATOR PANEL	
☐	FIRE ALARM CONTROL PANEL (FACP)	
♿	INDICATES HANDICAP ACCESS SUITE	
♿	INDICATES HEARING IMPAIRED SUITE	

NOTE FOR FIRE ALARM SYSTEM:
 1. FIRE ALARM SYSTEM SHALL BE SEPARATELY PERMITTED AND SUBMITTED BY THE FIRE ALARM CONTRACTOR.

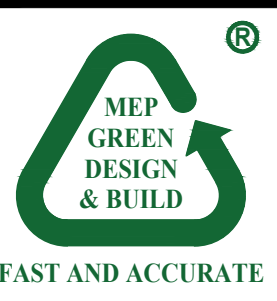
1 FIRE ALARM
 THIRD FLOOR PLAN
 SCALE: 1/8"=1'-0"

MEP GREEN DESIGN & BUILD, P.L.L.C. RETAINS COPYRIGHT TO THIS DOCUMENT. THE IDEA DESIGN AND DETAILS, AS A PROFESSIONAL AND INTELLECTUAL INSTRUMENT OF SERVICE, AND IS NOT TO BE USED/COPIED IN WHOLE OR IN PART, FOR ANY OTHER PROJECT WITHOUT THE EXPRESSED WRITTEN CONSENT OF MEP GREEN DESIGN & BUILD, P.L.L.C.

REVISION	NO.
CITY COMMENTS	J

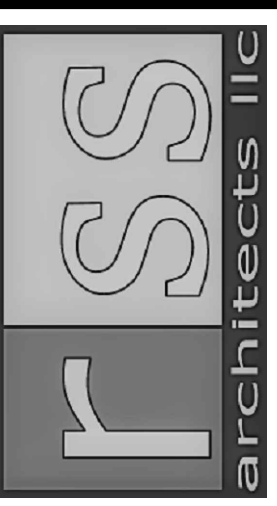
HOLIDAY INN EXPRESS
 850 NORTHSIDE DRIVE
 PILOT POINT, TEXAS 76258

LOCATION
 91024



FAST AND ACCURATE
 JAN. 06, 2024

 CHUNG DUC VU
 915 GDMN ST, HOUSTON, TX 77062
 TEL: (281)-786-1155
 FAX: (281)-282-9144
 WWW.MEPGREENDESIGNS.COM



RSS-ARCHITECTS.COM
 817/538-9258

Date 01-08-2024

Job 22020

Sheet

FA2.2