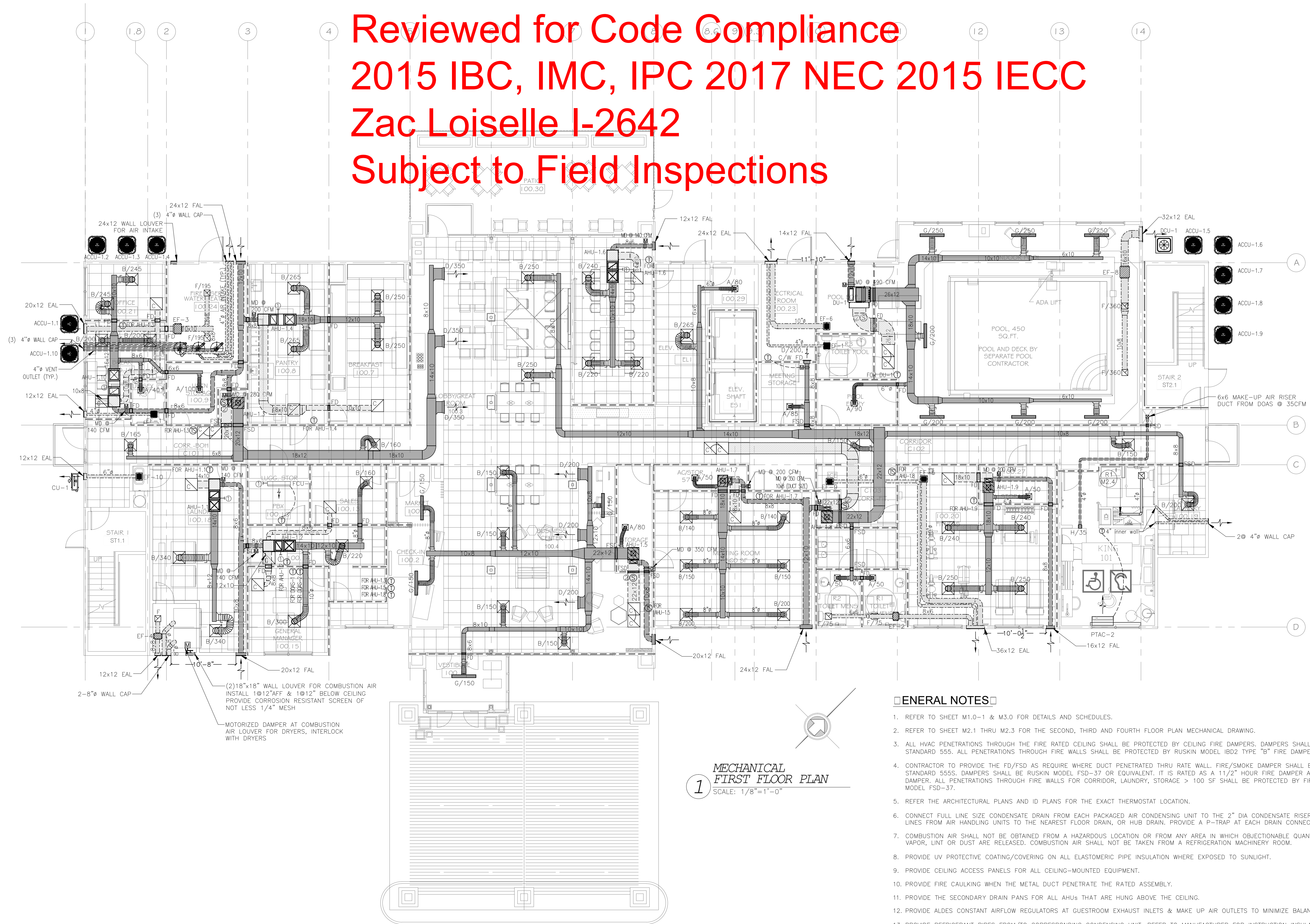


Reviewed for Code Compliance
2015 IBC, IMC, IPC 2017 NEC 2015 IECC
Zac Loiseau I-2642
Subject to Field Inspections



MECHANICAL FIRST FLOOR PLAN
 SCALE: 1/8"=1'-0"

GENERAL NOTES:

- REFER TO SHEET M1.0-1 & M3.0 FOR DETAILS AND SCHEDULES.
- REFER TO SHEET M2.1 THRU M2.3 FOR THE SECOND, THIRD AND FOURTH FLOOR PLAN MECHANICAL DRAWING.
- ALL HVAC PENETRATIONS THROUGH THE FIRE RATED CEILING SHALL BE PROTECTED BY CEILING FIRE DAMPERS. DAMPERS SHALL BE CLASSIFIED UNDER UL STANDARD 555. ALL PENETRATIONS THROUGH FIRE WALLS SHALL BE PROTECTED BY RUSKIN MODEL IBD2 TYPE "B" FIRE DAMPER.
- CONTRACTOR TO PROVIDE THE FD/FSD AS REQUIRE WHERE DUCT PENETRATED THRU RATE WALL. FIRE/SMOKE DAMPER SHALL BE CLASSIFIED UNDER UL STANDARD 555S. DAMPERS SHALL BE RUSKIN MODEL FSD-37 OR EQUIVALENT. IT IS RATED AS A 1 1/2" HOUR FIRE DAMPER AND A LEAKAGE CLASS 1 DAMPER. ALL PENETRATIONS THROUGH FIRE WALLS FOR CORRIDOR, LAUNDRY, STORAGE > 100 SF SHALL BE PROTECTED BY FIRE/SMOKE DAMPER RUSKIN MODEL FSD-37.
- REFER THE ARCHITECTURAL PLANS AND ID PLANS FOR THE EXACT THERMOSTAT LOCATION.
- CONNECT FULL LINE SIZE CONDENSATE DRAIN FROM EACH PACKAGED AIR CONDENSING UNIT TO THE 2" DIA CONDENSATE RISER. RUN CONDENSATE DRAIN LINES FROM AIR HANDLING UNITS TO THE NEAREST FLOOR DRAIN, OR HUB DRAIN. PROVIDE A P-TRAP AT EACH DRAIN CONNECTION.
- COMBUSTION AIR SHALL NOT BE OBTAINED FROM A HAZARDOUS LOCATION OR FROM ANY AREA IN WHICH OBJECTIONABLE QUANTITIES OF FLAMMABLE VAPOR, LINT OR DUST ARE RELEASED. COMBUSTION AIR SHALL NOT BE TAKEN FROM A REFRIGERATION MACHINERY ROOM.
- PROVIDE UV PROTECTIVE COATING/COVERING ON ALL ELASTOMERIC PIPE INSULATION WHERE EXPOSED TO SUNLIGHT.
- PROVIDE CEILING ACCESS PANELS FOR ALL CEILING-MOUNTED EQUIPMENT.
- PROVIDE FIRE CAULKING WHEN THE METAL DUCT PENETRATE THE RATED ASSEMBLY.
- PROVIDE THE SECONDARY DRAIN PANS FOR ALL AHUs THAT ARE HUNG ABOVE THE CEILING.
- PROVIDE ALDES CONSTANT AIRFLOW REGULATORS AT GUESTROOM EXHAUST INLETS & MAKE UP AIR OUTLETS TO MINIMIZE BALANCING EFFORT.
- PROVIDE REFRIGERANT PIPES FROM/TO CORRESPONDING CONDENSING UNIT. REFER TO MANUFACTURER FOR INSTRUCTION INSULATION. PROVIDE 1-1/2" AF ARMAFLEX INSULATION AS REQUIRED.
- PROVIDE THE FSD FOR PENETRATED DUCT WORK THRU RATED FLOOR AS REQUIRED. FIRE/SMOKE DAMPER SHALL BE CLASSIFIED UNDER UL STANDARD 555S. DAMPERS SHALL BE RUSKIN MODEL FSD-37 OR EQUAL. IT IS RATED AS A 1 1/2" HOUR FIRE DAMPER AND A LEAKAGE CLASS 1 DAMPER.
- PROVIDE CEILING RADIATION DAMPER WHERE THE REGISTER IS INSTALLED AT FIRE RATED CEILING. TYP
- PROVIDE THE SLEEVE FOR ALL DUCTWORK/PIPING PENETRATE THRU THE FIRE RATED ASSEMBLY WHICH IS NOT REQUIRED FSD. A MINIMUM 12-INCH-LONG (305 MM) BY 0.060-INCH-THICK (1.52 MM) STEEL SLEEVE SHALL BE CENTERED IN EACH DUCT OPENING. THE SLEEVE SHALL BE SECURED TO BOTH SIDES OF THE WALL AND ALL FOUR SIDES OF THE SLEEVE WITH MINIMUM 1 1/2-INCH BY 1 1/2-INCH BY 0.060-INCH (38 MM BY 38 MM BY 1.52 MM) STEEL RETAINING ANGLES. THE RETAINING ANGLES SHALL BE SECURED TO THE SLEEVE AND THE WALL WITH NO. 10 (M5) SCREWS. THE ANNULAR SPACE BETWEEN THE STEEL SLEEVE AND THE WALL OPENING SHALL BE FILLED WITH ROCK (MINERAL) WOOL BATTING ON ALL SIDES.
- PROVIDE FSD FOR THE SUPPLY/RETURN/EXHAUST AT 2 HOUR RATED PENETRATION FLOOR/CEILING/ROOF/ASSEMBLY AS REQUIRE. REFER TO ARCHITECTURAL PLANS FOR DETAIL.

KEY NOTES:

- PROVIDE FULL SIZE CONDENSATE PIPE TO THE NEAREST APPROVE SANITARY PLUMBING FIXTURE, FLOOR DRAIN, FLOOR SINK, HUB DRAIN OR STORM DRAIN SYSTEM. FOR AHU/FCU FIELD VERIFY AS REQUIRED. CONDENSATE PIPE SHALL BE INSULATED WITH 1" AF ARMAFLEX INSULATION (TYP).
- SMOKE DETECTOR SHALL BE CONNECTED TO THE ALARM PANEL & INTERLOCKED WITH AHU TO SHUT DOWN WHEN SMOKE IS DETECTED.

MEP GREEN DESIGN & BUILD PLLC RETAINS COPYRIGHT TO THIS DOCUMENT. THE IDEA DESIGN AND DETAILS, AS A PROFESSIONAL AND INTELLECTUAL INSTRUMENT OF SERVICE, AND IS NOT TO BE USED/COPIED IN WHOLE OR IN PART, FOR ANY OTHER PROJECT WITHOUT THE EXPRESSED WRITTEN CONSENT OF MEP GREEN DESIGN & BUILD PLLC.

REVISION	NO.
HOLIDAY INN EXPRESS	
850 NORTHSIDE DRIVE PILOT POINT, TEXAS 76258	
LOCATION 91024	
AUG. 28, 2023	
<small>MEP GREEN DESIGN & BUILD, PLLC REGISTRATION # F-10982 915 GDMN St. Houston, TX 77028 Tel: (281) 796-1155 Fax: (281) 795-9144 www.mepgreendesign.com</small>	
<small>RSS-ARCHITECTS.COM 817/538-9258</small>	
Date	8-28-2023
Job	22020
Sheet	M2.0