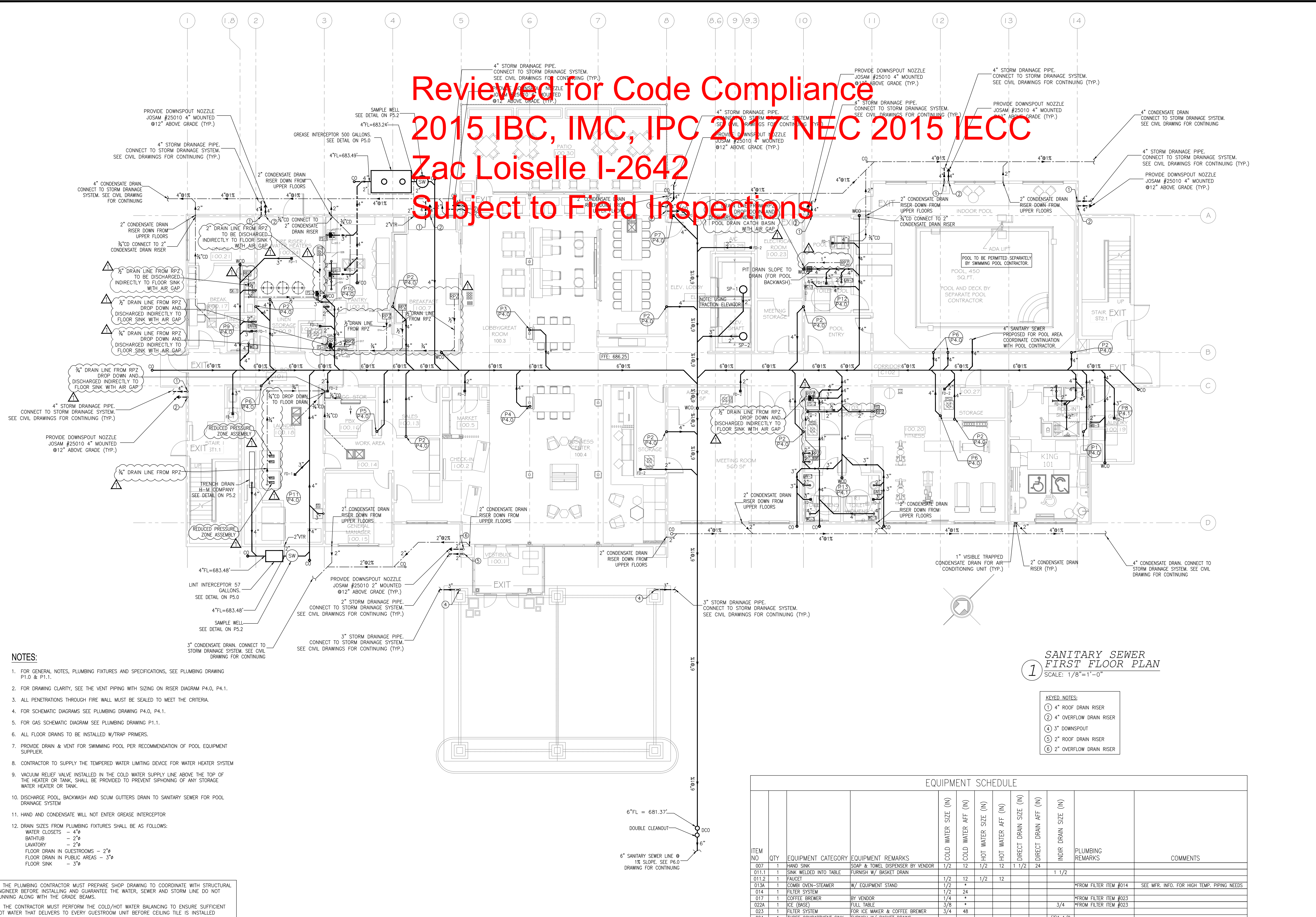


Review of Code Compliance  
 2015 IBC, IMC, IPC 2017 NEC 2015 IECC  
 Zac Loiseau I-2642  
 Subject to Field Inspections



- NOTES:**
- FOR GENERAL NOTES, PLUMBING FIXTURES AND SPECIFICATIONS, SEE PLUMBING DRAWING P1.0 & P1.1.
  - FOR DRAWING CLARITY, SEE THE VENT PIPING WITH SIZING ON RISER DIAGRAM P4.0, P4.1.
  - ALL PENETRATIONS THROUGH FIRE WALL MUST BE SEALED TO MEET THE CRITERIA.
  - FOR SCHEMATIC DIAGRAMS SEE PLUMBING DRAWING P4.0, P4.1.
  - FOR GAS SCHEMATIC DIAGRAM SEE PLUMBING DRAWING P1.1.
  - ALL FLOOR DRAINS TO BE INSTALLED W/TRAP PRIMERS.
  - PROVIDE DRAIN & VENT FOR SWIMMING POOL PER RECOMMENDATION OF POOL EQUIPMENT SUPPLIER.
  - CONTRACTOR TO SUPPLY THE TEMPERED WATER LIMITING DEVICE FOR WATER HEATER SYSTEM
  - VACUUM RELIEF VALVE INSTALLED IN THE COLD WATER SUPPLY LINE ABOVE THE TOP OF THE HEATER OR TANK, SHALL BE PROVIDED TO PREVENT SIPHONING OF ANY STORAGE WATER HEATER OR TANK.
  - DISCHARGE POOL, BACKWASH AND SCUM GUTTERS DRAIN TO SANITARY SEWER FOR POOL DRAINAGE SYSTEM
  - HAND AND CONDENSATE WILL NOT ENTER GREASE INTERCEPTOR
  - DRAIN SIZES FROM PLUMBING FIXTURES SHALL BE AS FOLLOWS:  
 WATER CLOSETS - 4"  
 BATHTUB - 2"  
 LAVATORY - 2"  
 FLOOR DRAIN IN GUESTROOMS - 2"  
 FLOOR DRAIN IN PUBLIC AREAS - 3"  
 FLOOR SINK - 3"

- THE PLUMBING CONTRACTOR MUST PREPARE SHOP DRAWING TO COORDINATE WITH STRUCTURAL ENGINEER BEFORE INSTALLING AND GUARANTEE THE WATER, SEWER AND STORM LINE DO NOT RUNNING ALONG WITH THE GRADE BEAMS.
- THE CONTRACTOR MUST PERFORM THE COLD/HOT WATER BALANCING TO ENSURE SUFFICIENT HOT WATER THAT DELIVERS TO EVERY GUESTROOM UNIT BEFORE CEILING TILE IS INSTALLED

**1 SANITARY SEWER FIRST FLOOR PLAN**  
 SCALE: 1/8"=1'-0"

- KEYED NOTES:**
- ① 4" ROOF DRAIN RISER
  - ② 4" OVERFLOW DRAIN RISER
  - ③ 3" DOWNSPOUT
  - ④ 2" ROOF DRAIN RISER
  - ⑤ 2" OVERFLOW DRAIN RISER

EQUIPMENT SCHEDULE											
ITEM NO	QTY	EQUIPMENT CATEGORY	EQUIPMENT REMARKS	COLD WATER SIZE (IN)	COLD WATER AFF (IN)	HOT WATER SIZE (IN)	HOT WATER AFF (IN)	DIRECT DRAIN SIZE (IN)	INDIR DRAIN AFF (IN)	PLUMBING REMARKS	COMMENTS
007	1	HAND SINK	SOAP & TOWEL DISPENSER BY VENDOR	1/2	12	1/2	12	1 1/2	24		
011.1	1	SINK WELDED INTO TABLE	FURNISH W/ BASKET DRAIN	1/2	12	1/2	12		1 1/2		
011.2	1	FAUCET		1/2	12	1/2	12		1 1/2		
013A	1	COMBI OVEN-STEAMER	W/ EQUIPMENT STAND	1/2	*					*FROM FILTER ITEM #014	SEE MFR. INFO. FOR HIGH TEMP. PIPING NEEDS
014	1	FILTER SYSTEM		1/2	24						
017	1	COFFEE BREWER	BY VENDOR	1/4	*					*FROM FILTER ITEM #023	
022A	1	ICE (BASE)	FULL TABLE	3/8	*					*FROM FILTER ITEM #023	
023	1	FILTER SYSTEM	FOR ICE MAKER & COFFEE BREWER	3/4	48						
024	1	THREE COMPARTMENT SINK	FURNISH W/ BASKET DRAINS	1/2		1/2			(3) 1/2		
024.1	1	FAUCET AND PRE-RINSE		1/2		3/4	12				
026	1	UNDERCOUNTER WAREWASHER							1		

REVISION	NO.
CITY COMMENTS	1
HOLIDAY INN EXPRESS 850 NORTHSIDE DRIVE PILOT POINT, TEXAS 76258	
LOCATION 91024	
FAST AND ACCURATE JAN. 08, 2024	
MEP GREEN DESIGN & BUILD, P.L.C. 915 GEDIN ST, HOUSTON, TX 77068 Tel: (281)-786-1155 Fax: (281)-282-9144 www.mepgreendesigns.com	
RSS architects llc	
RSS-ARCHITECTS.COM 817/538-9258	
Date	01-08-2024
Job	22020
Sheet	P2.0

MEP GREEN DESIGN & BUILD, P.L.C. RETAINS COPYRIGHT TO THIS DOCUMENT. THE IDEA DESIGN AND DETAILS AS A PROFESSIONAL AND INTELLECTUAL INSTRUMENT OF SERVICE AND IS NOT TO BE USED/COPIED IN WHOLE OR IN PART, FOR ANY OTHER PROJECT WITHOUT THE EXPRESSED WRITTEN CONSENT OF MEP GREEN DESIGN & BUILD, P.L.C.