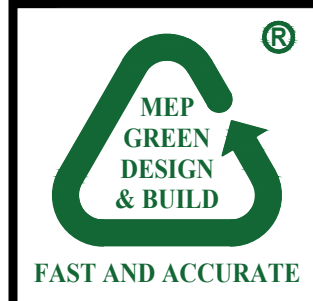


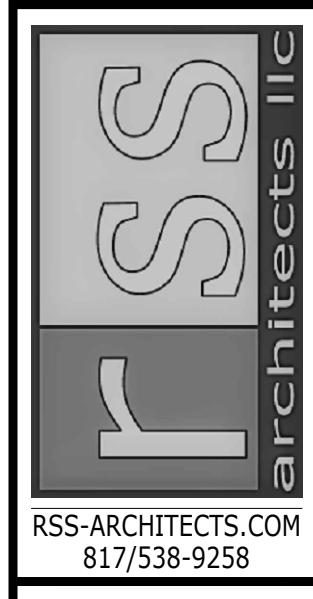
REVISION	NO.
CITY COMMENTS	1

HOLIDAY INN EXPRESS
 850 NORTHSIDE DRIVE
 PILOT POINT, TEXAS 76258

LOCATION
 91024



FAST AND ACCURATE
 JAN. 08, 2024
 REGISTERED PROFESSIONAL ENGINEER
 MECHANICAL ELECTRICAL PLUMBING
 STATE OF TEXAS
 101311
 MECHANICAL ELECTRICAL PLUMBING
 MEP GREEN DESIGN & BUILD, P.L.L.C.
 REGISTRATION # F-10692
 915 GEMINI ST, HOUSTON, TX 77058
 Tel: (281)-786-1125
 Fax: (281)-282-9144
 www.mepgreendesigns.com



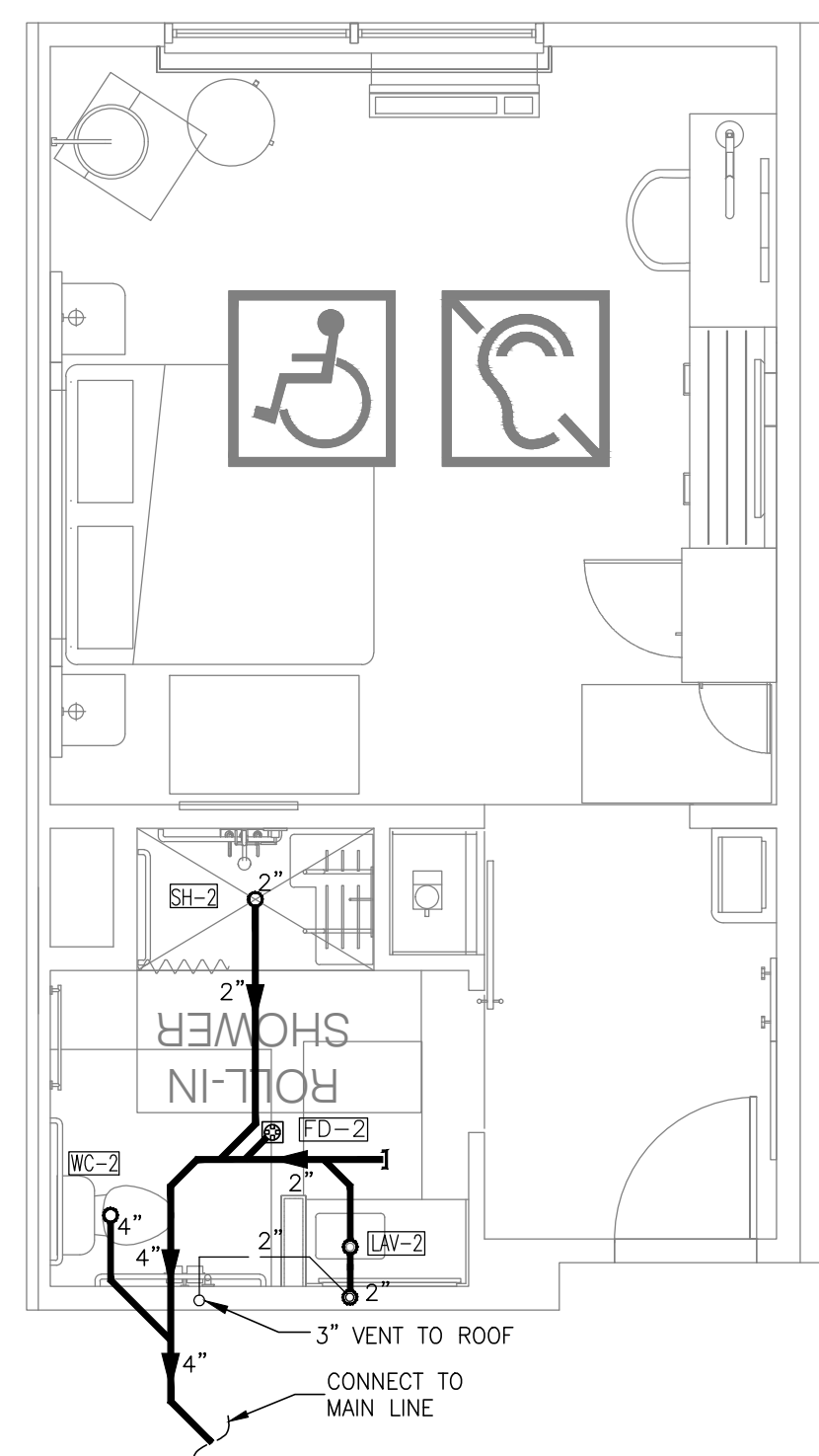
Date 01-08-2024

Job 22020

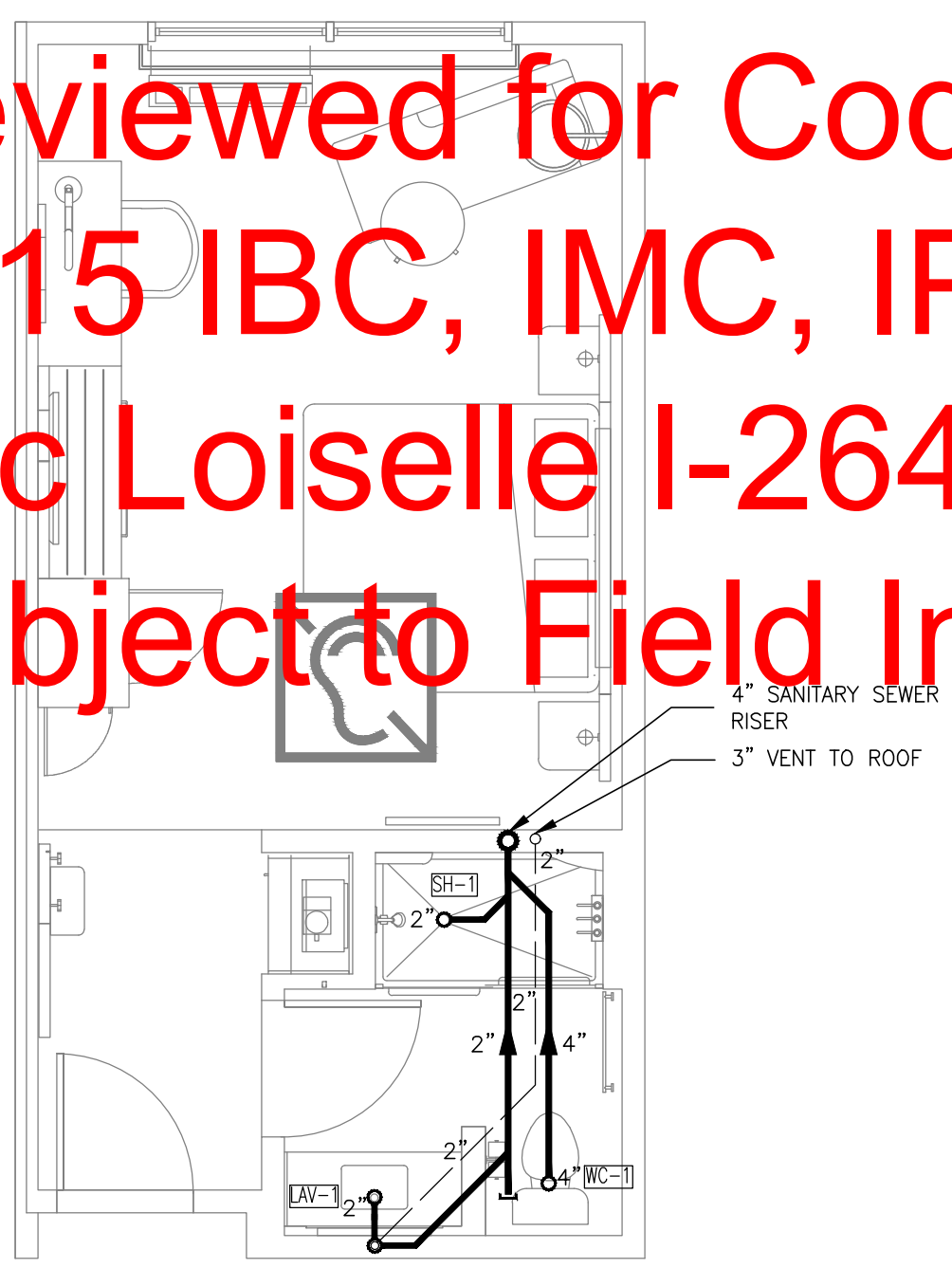
Sheet

P7.1

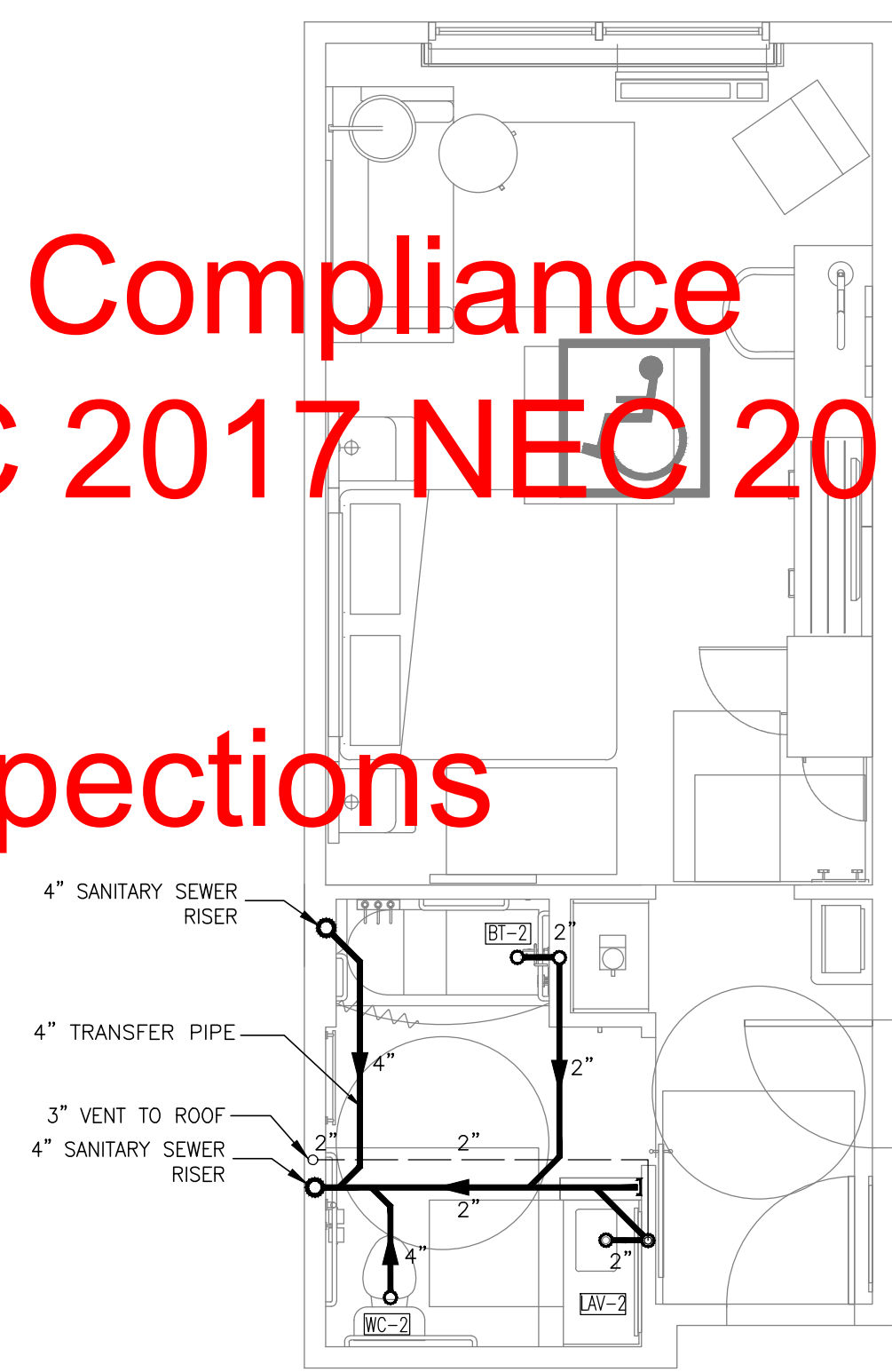
Reviewed for Code Compliance
2015 IBC, IMC, IPC 2017 NEC 2015 IECC
Zac Loiseau I-2642
Subject to Field Inspections



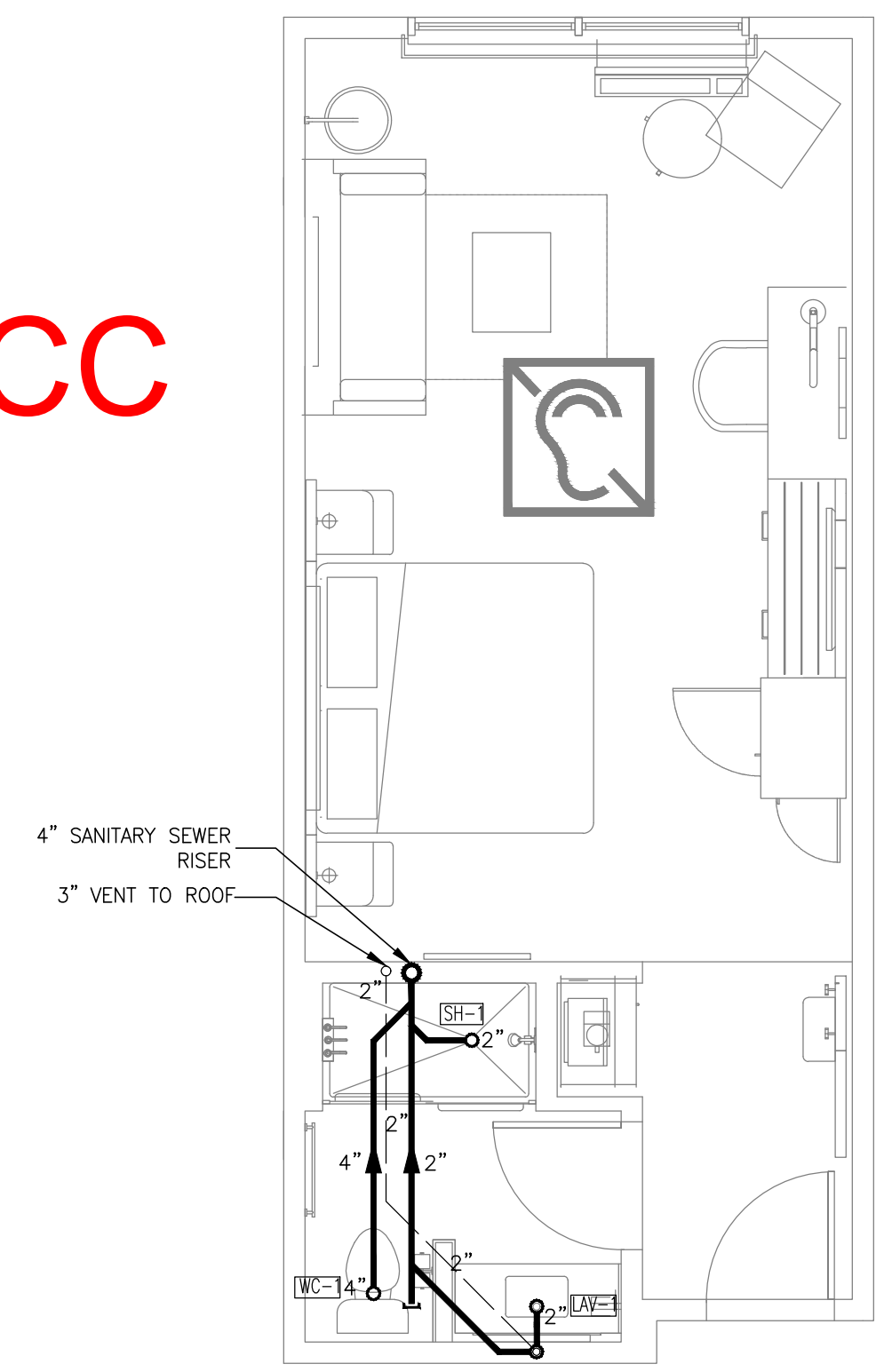
① KING ACCESSIBLE
 SCALE: 1/4"=1'-0"



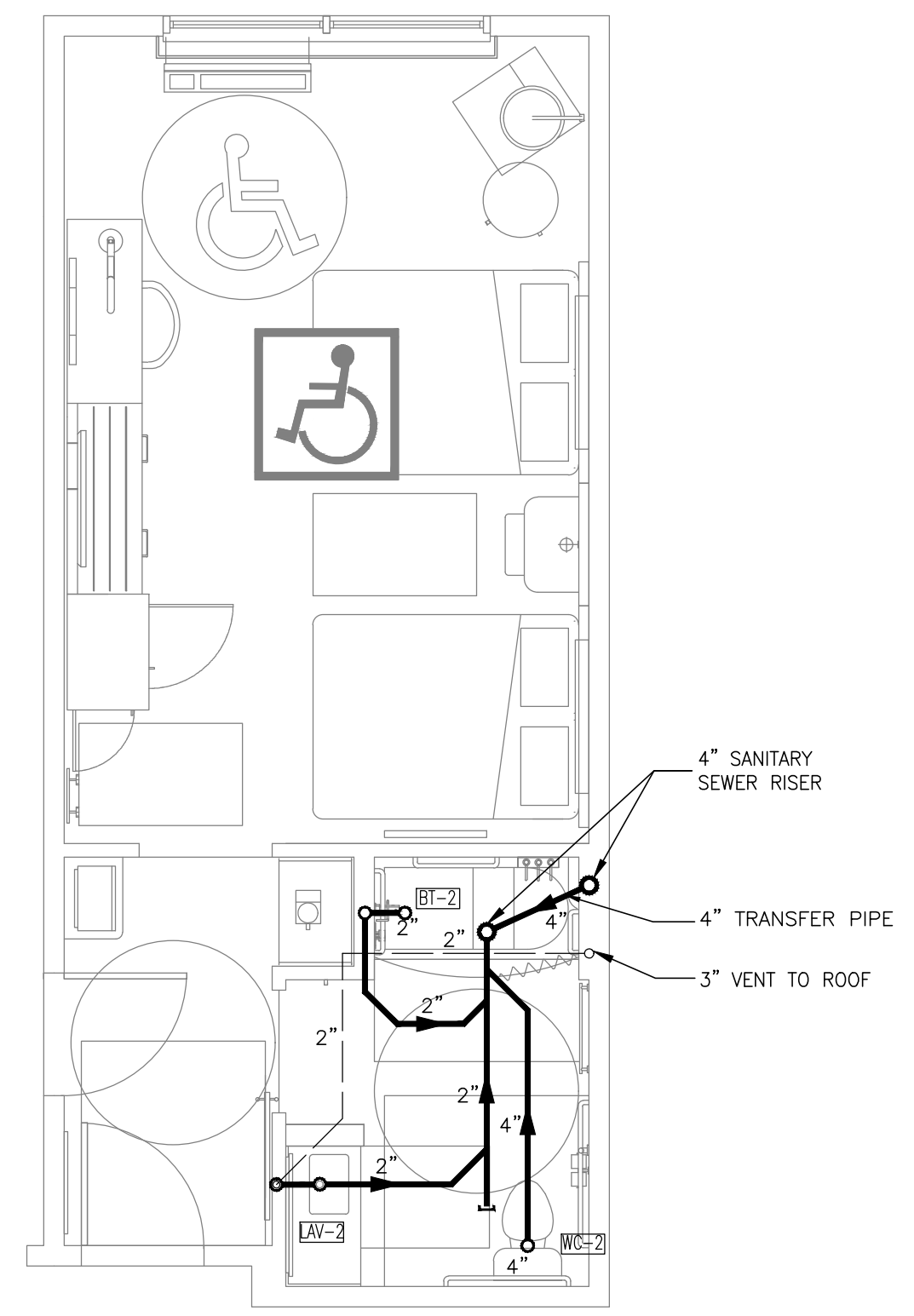
② KING / HEARING IMPAIRED
 SCALE: 1/4"=1'-0"



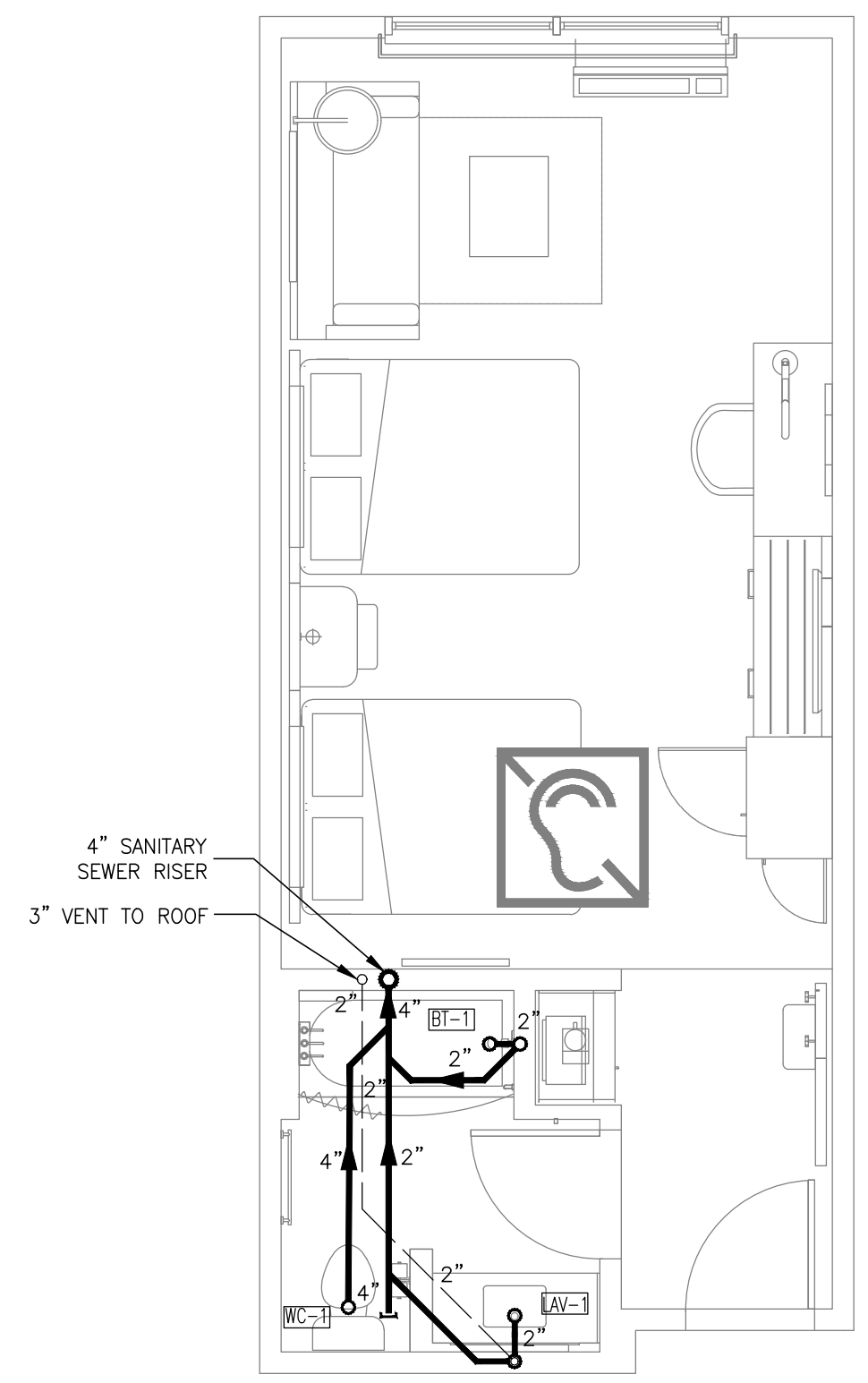
③ KING SUITE ACCESSIBLE
 SCALE: 1/4"=1'-0"



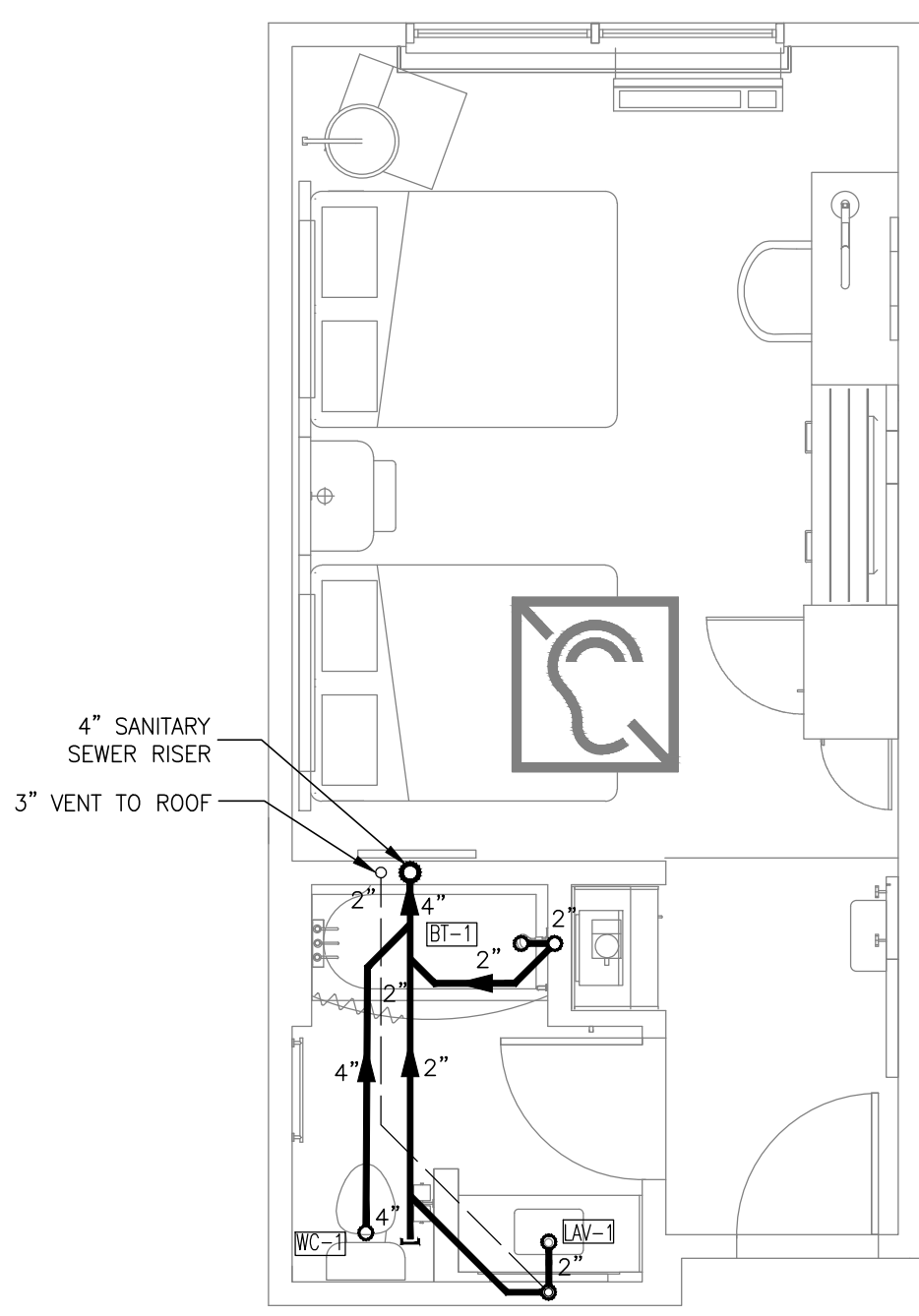
④ KING SUITE/ HEARING IMPAIRED
 SCALE: 1/4"=1'-0"



⑤ QUEEN ACCESSIBLE
 SCALE: 1/4"=1'-0"



⑥ QUEEN SUITE/ HEARING IMPAIRED
 SCALE: 1/4"=1'-0"



⑦ QUEEN/ HEARING IMPAIRED
 SCALE: 1/4"=1'-0"

MEP GREEN DESIGN & BUILD, P.L.L.C. RETAINS COPYRIGHT TO THIS DOCUMENT. THE IDEA DESIGN AND DETAILS, AS A PROFESSIONAL AND INTELLECTUAL INSTRUMENT OF SERVICE, AND IS NOT TO BE USED/COPIED IN WHOLE OR IN PART, FOR ANY OTHER PROJECT WITHOUT THE EXPRESSED WRITTEN CONSENT OF MEP GREEN DESIGN & BUILD, P.L.L.C.